

# Improving Quality of Care: Maternal Mood Disorders

Elizabeth Huyett, MSN, RN, CEN & Kerin Kohler, BSW

## Problem Statement

Within the Reading Hospital, Tower Health ambulatory and inpatient care settings, there were no guidelines, standard processes or expectations around screening obstetrical patients for maternal mood disorders.

## Interdisciplinary Team (IDT)

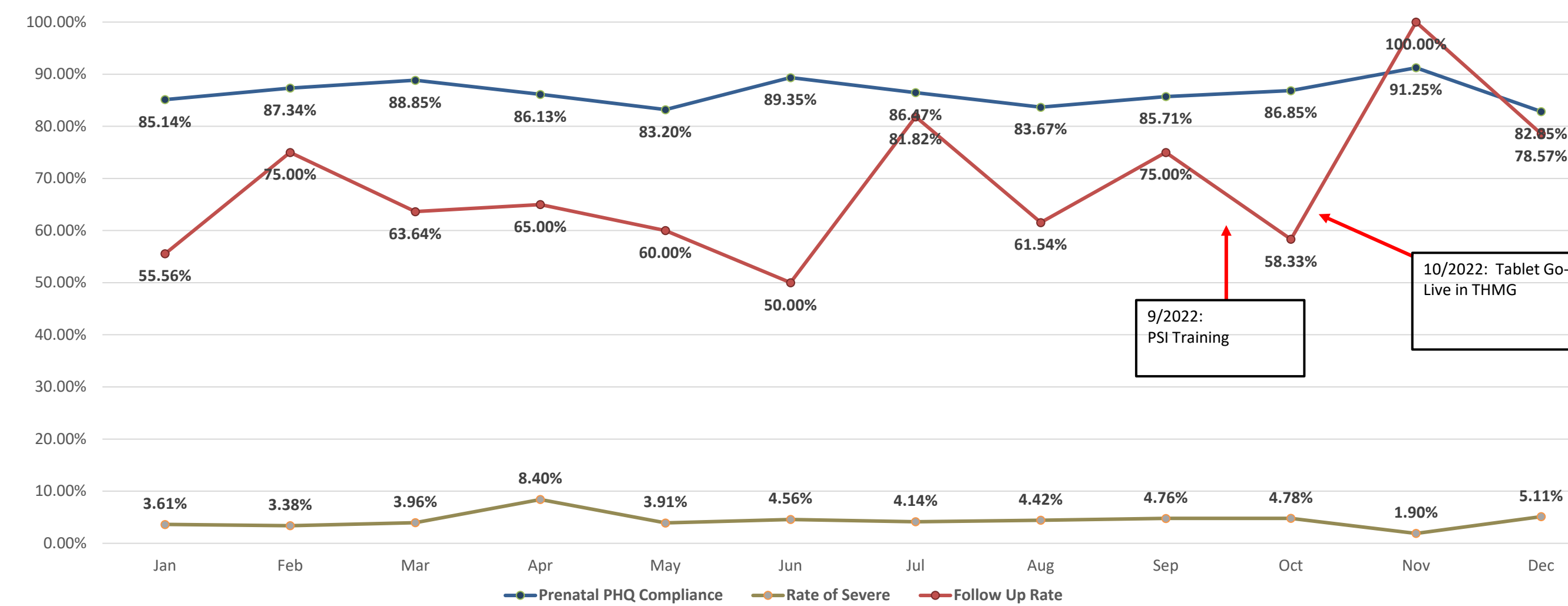
- **Clinical Ambulatory Representatives** from each ambulatory OBGYN offices including providers, registered nurses and social workers
- **Clinical Inpatient Representatives** from OB Triage, Labor and Delivery, Mother-Baby, Pediatrics, and Emergency Department)
- **Population Health Team** includes Integrated Care Clinicians (ICC), Maternal-Child Care Navigators, and Pop Health leadership

## Initial Gap Analysis

- Inconsistent screening workflows between ambulatory offices
- Limited resources available for the ambulatory care providers to provide to patients
- Improve care coordination with the ICCs
- Gaps in documentation across the care continuum
- Community shortages for behavioral health services
- Providers not comfortable addressing mental health concerns due to lack of availability of resources and training to respond to immediate patient crisis
- Electronic health record (EMR) not optimized to support patient flow through the system and screening automation
- No data available to monitor progress

## Results

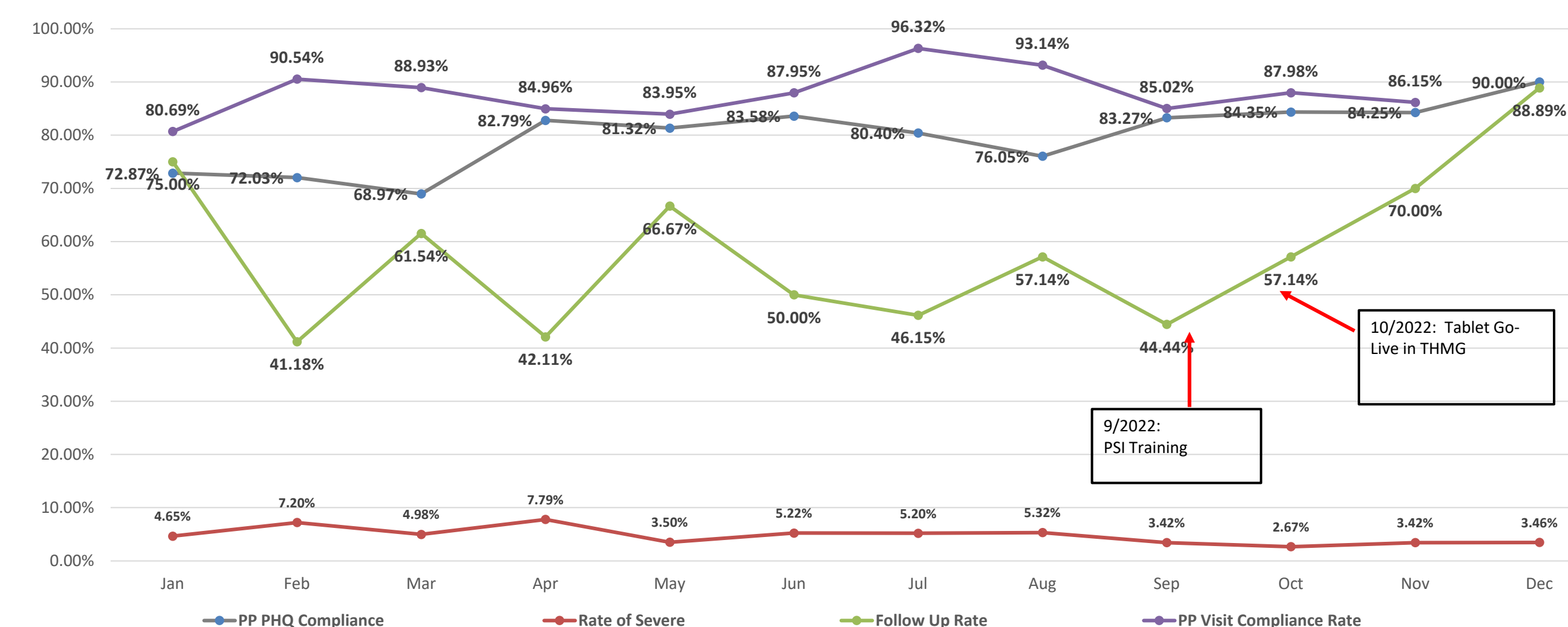
CY22 Monthly Prenatal Depression Screening Compliance



## Postpartum Support International Conference Attendance

- 2-day Perinatal Mood Disorders Components of Care
  - 126 individuals registered
  - 72 were local to our county
- Advanced Psycho-Pharmacology
  - 35 individuals registered
  - 15 were local to our county
- Advanced Psychotherapy
  - 39 registered
  - 14 were local to our county

CY22 Monthly PP Depression Screen Compliance



## Interventions

- Standardized screening/referral process
  - Created list of community resources
  - Improve IDT documentation
  - Educated on the benefits of using the problem list to update patient's plan of care
  - Hosted Postpartum Support International (PSI) training
  - Created reports
- ### Moving Forward
- Publish a best practice guideline for screening and treating
  - Identify a patient voice
  - Commitment to work with IT to improve EMR functionality
  - Advocate for patient access and support patient navigation of community behavioral health resources
  - Enhance data collection/analysis

On this topic our team would most like to learn more about   from our peers.